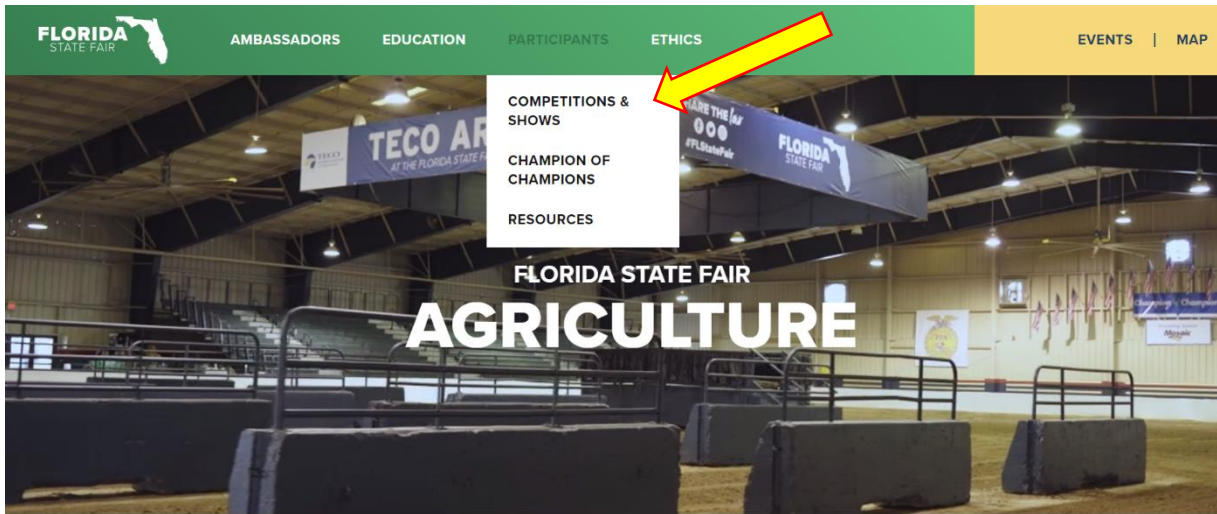


How to Submit an Open Livestock Online Entry

GO TO <https://www.floridastatefairAG.com/>

SELECT the "Participants" TAB

CHOOSE "Competitions & Shows" from the dropdown list



JOIN US NEXT YEAR, FEBRUARY 8-19, 2024



AG PARKING PROGRAM
INFORMATION

ETHICS WORKSHOP

SCHOLARSHIPS

LATE ENTRY POLICY

EDUCATIONAL SEMINAR

FAIR LOGGING

AG TEACHER/EXTENSION AGENT
TICKET REQUEST

QUESTIONS?

2024 FAIR SEASON COMPETITIONS & SHOWS

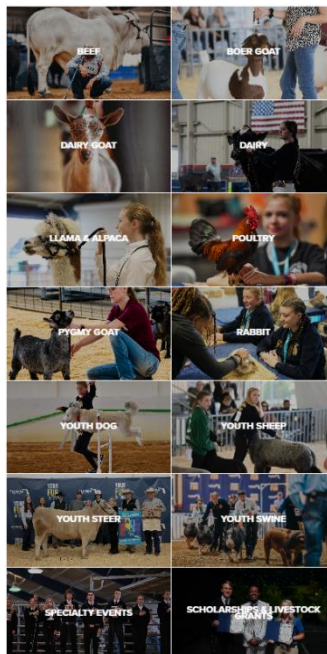
The Florida State Fair hosts many agricultural competitions and events throughout the year. From the best of the best in youth and open livestock competitions to educational programs like AgVenture, there's always something to discover in agriculture at the Florida State Fair. The Florida State Fair strives to offer quality competitive programs for Florida's Agricultural community to showcase Florida Agriculture to our diverse audience of Fair goers.

We are thrilled that you are interested in the 2024 Florida State Fair. All show information can be found below. We encourage you to check out all the information in regards to each show. All students that are entered in the Florida State Fair Youth Show must complete the ethics training to show an animal at the 2024 Florida State Fair Youth exhibiting at other fairs should check that specific fair's rules for ethics qualifications. The last workshop offered for exhibitors showing at the Florida State Fair will be held in January at Silverview High School, Silverview, Florida.

Please Note: We are in the process of formulating rules for the 2024 Florida State Fair. Rules and Regulations will be posted as soon as they are finalized. All Show Information will be posted by October 2023.

Livestock Schedule of Events

Click on the Show you are
interested in



COMPETITIONS & SHOWS

WORKSHOP

SCHOLARSHIPS

LATE ENTRY POLICY

LIVESTOCK ARRIVAL

FAIR LODGING

QUESTIONS?

BEEF SHOW

ALL YOU NEED TO KNOW

We are thrilled that you are interested in the 2023 Florida State Fair.

In this section, we have assembled all the information you will need to enter the Open and Youth Beef Shows. We encourage you to check out all the information in regards to the show(s).

All students that are entered in the 2023 Florida State Fair Youth Show must complete the Youth Livestock Show Ethics and Animal Care Workshop to show an animal at the Florida State Fair. Youth exhibiting at other fairs should check that specific fair's rules for ethics qualifications. The last workshop offered for exhibitors showing at the Florida State Fair will be held on January 16, 2023.

CLICK on "Show Rules"

SELECT the "Open Rules" for information pertaining to your entry.

SHOW INFORMATION

SHOW RULES

REGISTRATION

DOWNLOADS

- **READ** the FULL handbook so you know in advance of any show rule changes or additions, show times, general rules, ticket policy, etc.

SHOW RULES

Open Beef Show

OPEN BEEF SHOW RULES

OPEN ANGUS SHOW

OPEN GREY & RED BRAHMAN SHOW

OPEN BRANGUS SHOW

OPEN RED BRANGUS SHOW

OPEN ULTRA BRANGUS SHOW

OPEN CHAROLAIS SHOW

OPEN DEXTER SHOW

OPEN LIMOUSIN SHOW

OPEN SANTA GERTRUDIS SHOW

OPEN PUREBRED SIMMENTAL SHOW

OPEN PERCENTAGE SIMMENTAL SHOW

OPEN ZEBU SHOW

Youth Beef Show

YOUTH BEEF SHOW RULES

YOUTH ANGUS SHOW

YOUTH GREY & RED BRAHMAN SHOW

YOUTH BRANGUS SHOW

YOUTH RED BRANGUS SHOW

YOUTH ULTRA BRANGUS SHOW

YOUTH CHAROLAIS SHOW

YOUTH PERCENTAGE SIMMENTAL SHOW

YOUTH PUREBRED SIMMENTAL SHOW

Youth Limousin, Santa Gertrudis, Zebu and All Other Beef Cattle Show Information is located on page 7 of the Youth Beef Show Rules

SOUTHEASTERN MINIATURE ZEBU CLASSIC RULES

SOUTHEASTERN MINIATURE ZEBU CLASSIC ENTRY FORM

FOR CLASS LIST

CLICK on "Show Rules"

SELECT one of the Shows

FOR EXAMPLE:

Department: Open Beef 1

Division: Open Brangus Show

Class: 05 – Late Junior Heifer born Feb. 1 – Feb. 28

- **LOOK AT** the Class Listing so you know exactly what class your entry would be entered in. It is suggested printing these pages out so it will make the On-Line Entry Process easier.

SHOW RULES

REGISTRATION

The registration deadline is **December 1, 2023**

OPEN BEEF ENTRY FORM

YOUTH BEEF ENTRY FORM

ON-LINE REGISTRATION

UPLOAD LIVESTOCK ENTRY DOCUMENTS (Signature Page for Youth Online Entries, Animal Registration Papers, YQCA Certificate, etc.)

SIGNATURE PAGE (for Online Entries Only)

Need help registering On-Line? Check out these two tutorials.

How to Submit an Open Livestock Online Entry – **Coming Soon**

How to Submit a YOUTH Livestock Online Entry – **Coming Soon**

2024 SHOW CATALOGS - COMING FEBRUARY 2024

DOWNLOADS

CLICK on "Registration"

SELECT the Online Entry Form

CLICK on "Downloads"

This section could possibly have additional open show information but the main focus of this tab is resources for our Youth Livestock Exhibitors.

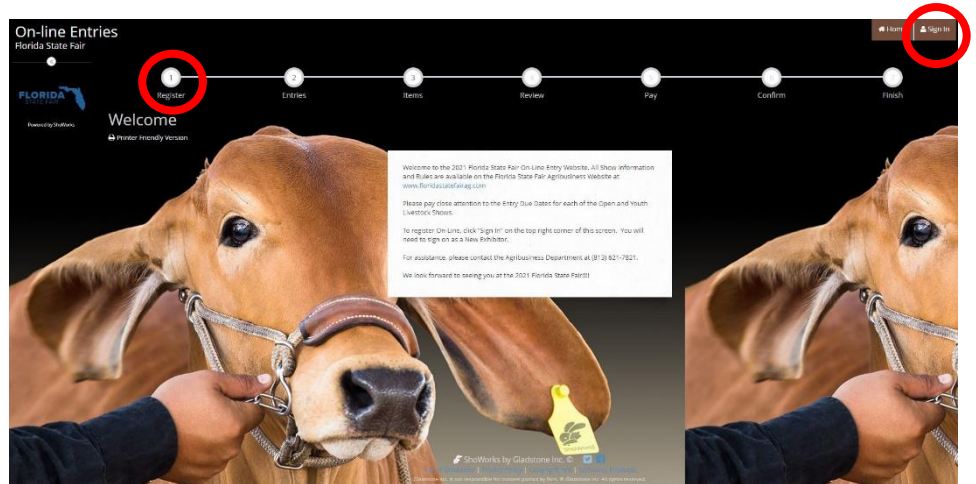
Open Livestock Competitions | Online Entry Form Instructions

STEP 1 – Launch Online Entry Form on the Agribusiness Website

Once you have read the handbook and know the department, division & class for your entry; you are ready to complete the **Online Entry Form**.

STEP 2 – Read Welcome Page

- You will be brought to the online application **Welcome Page**, with a message from us.
- NOTE:** When completing the application be sure to enter your personal information accurately as all communication will use that information.
- NOTE:** Please look at the specific show rules for Entry Due Dates!!
- CLICK** on the number (1) **Register** button or the **Sign In** link in the upper right corner



STEP 3 – Register

- Select “Exhibitor” from the drop down list
- ENTER** your full First and Last Name (case sensitive)
- CHOOSE** the button for “I am a new exhibitor”
- CLICK** the blue “Continue” button.

Note: ALL past fair exhibitors will be **REQUIRED** to register as a new exhibitor each year to create a new account.

Registration

Tip:
Are you a family or group with multiple exhibitors? Sign in as a Quick Group to submit entries for multiple family members or a group of exhibitors and check out all in the same cart.

First Name

Last Name

or sign in using ShowWorks Passport
It's free and lets you securely keep your information and entries **year-to-year** and reuse across different fairs and shows. Get instant notifications when it's time to show or entries have been judged and see your awards. Sign up now and begin keeping track of your own entries!
[Tell me more about ShowWorks Passport...](#)

☒ I am a new exhibitor or have yet to register this year ☐ I have previously registered this year

[Continue](#)

Open Livestock Competitions | Online Entry Form Instructions... continued

STEP 4 – Exhibitor Information

- On **Registration Page** you will fill in all your **Exhibitor Information**.
- You will also have to create a password that you want for your account. You will need to remember your password for the future if you need to log back in.
- All required fields are denoted by the blue asterisk.*
- Several of these questions are needed for the Youth Shows Only. Please Note: if you are showing in both the Open and Youth Shows – fill these questions out during the initial registration process.
- **CLICK** the brown “Continue” button.

STEP 5 – Confirm Registration Information

- The Registration Page you will **Confirm Registration Information** you entered is correct.
- **NOTE:** If you see any mistakes, **SELECT** the “Back” button in your browser to go to the previous page.
- **CLICK** the brown “Continue” button.

STEP 6 – Add Entry to Cart

On this screen you will be able to create your entry.

- **CHOOSE** a Department.
A Department is the main category that you are competing. (Open Dairy, Open Boer Goat, etc.)
- **CHOOSE** a Division. (This would be Breed)
- **CHOOSE** a Class.
- **COMPLETE** any additional fields that are either mandatory or optional.
- **CLICK** “Add Entry to Cart” button.

Please look at the **Special Instructions** at the top of the page

Open Livestock Competitions | Online Entry Form Instructions... continued

STEP 7 – Add More Entries

On this screen you will be able to create additional entry or **SELECT** Continue.

- **CHOOSE** one of three buttons
Add Different Entry: Allows you to add an entry from a new Department & Division, **OR**
Add Similar Entry: Allows you to add an entry same Department & Division.
If you have more entries simply repeat STEP 6.
- **CLICK** the blue “Continue” button if you are finished adding entries

STEP 8 – Additional Items

On this screen you will be able to add items for your specific show
 (Open Beef and Open Pygmy Goat Show)

- **Select** the quantity to add it to the cart.
- **CLICK** the brown “Continue” button

STEP 9 – Review of Cart

On this screen you will be able to review all your entries and “Check-out.”

- **CHOOSE** one of four buttons.
Add More Entries: Allows you to add more entries.
Empty Cart: Allows you to start over.
Save the cart for later: Allows you to save your cart so you can return at a later time and continue the check-out process.
NOTE: Use the pencil icon on the right of each entry to edit an entry or the red x to delete an entry.
- **CLICK** the brown “Check-out” button if you are ready to submit your entries.

Open Livestock Competitions | Online Entry Form Instructions... continued

STEP 10 – Payment

On this screen you will be able to choose when you want to pay for your entries.

- **CHOOSE** one of two payment options

Pay Now:

- **SELECT** the Payment Method
- **PROVIDE** Payment Information
- **TYPE “YES”** in “I agree to above statement”

CHOOSE the blue “Submit” button to complete transaction

Pay Later: Allows you to pay for your entry by mailing us a check. Will automatically take you to the Confirm Page

- **TYPE “YES”** in “I agree to above statement”
- **CHOOSE** the blue “Submit” button to complete transaction.
- You will be emailed a receipt with instructions for mailing your check.

Note:

If you **SELECT “Pay Later”** you **WILL NOT** be able to sign back in and pay online.
If **SELECTING “Pay Later”** you will need to pay by mailing a check.

Payment

Would you like to pay now or later?
Immediate payment is optional. You may choose to either Pay Now the balance of \$25.00 in the following step, or you may skip payment by choosing Pay Later and following the instructions on your receipt to remit payment at a later time.

Pay Later → Pay Now

Payment

Provide Payment Information
Your balance is \$25.00. Please complete the following for your purchase. You will confirm on the next page.

Amount Due: \$25.00

Payment Method: -- Credit or Debit Card --
-- Credit or Debit Card --
Visa
American Express
Discover
Master Card

Payment

Provide Payment Information
Your balance is \$25.00. Please complete the following for your purchase. You will confirm on the next page.

Amount Due: \$25.00

Payment Method: Visa

Account Number:

CVV:

Expiration Date:

☐ Use my previous address

Name on Card:

Billing Address:

Billing City:

Billing State/Prov:

Billing Postal Code:

Billing Country:

Continue

Confirm

Do you agree to the following?
Below are items which are about to be entered.

⚠ You have one more step remaining. Your items will NOT be added until you type "YES" in the box below and click "Submit".

Item	Description	Amount
Fair Sample's items:		
Open Angus	Class: 24 - March Junior Yearling Heifers calved March, 2019 Gender: Female Birth Date: 03/09/2019 Animal Name: FSF Sample Entry #1 Registration ID: R12345 Tattoo#: FSF2021	\$15.00
Open Boer Goat	Class: 02 - Percentage Junior Doe, 3 to under 6 months Gender: Female Birth Date: 10/01/2020 Tag ID: FSF1 Animal Name: FSF Sample Entry #2 Registration ID: 54321	\$10.00
Total for Fair Sample with 2 entries		\$25.00
2 TOTAL ITEMS IN CART:		\$25.00
BALANCE DUE:		\$25.00

Signature

I (as the exhibitor of this project) hereby certify that this/these animal(s) are intended for exhibition strictly in accordance with the rules and regulation in the 2021 Show Rules, by which I, the undersigned, understand & agree to abide by.
I also agree to abide by the IAFE National Code of Show Ethics as stated in the rules.
I also agree to abide by the General Disputes Policy as stated in the Rules.
I agree and consent to the use of pictures, including but not limited to photographs and video, of me and/or animals in any or all publications, TV, publicity brochure, Internet site, or other publicity associated with the Florida State Fair.
I understand that the 2021 Youth Swine Show is held in conjunction with the 2021 Florida State Fair and agree that the Florida State Fair is not liable or responsible for any delay, change of dates or cancellation of the 2021 Florida State Fair due to the following force majeure events: (a) acts of God; (b) flood, fire, earthquake; or (c) other potential disaster(s) or catastrophe(s), such as epidemics, or explosion.

I (as the parent of the exhibitor of this project) hereby certify that this/these animal(s) are intended for exhibition strictly in accordance with the rules and regulation in the 2021 Show Rules, by which I, the undersigned, understand & agree to abide by.
I also agree to abide by the IAFE National Code of Show Ethics as stated in the rules.
I also agree to abide by the General Disputes Policy as stated in the Rules.
I agree and consent to the use of pictures, including but not limited to photographs and video, of me and/or animals in any or all publications, TV, publicity brochure, Internet site, or other publicity associated with the Florida State Fair.
I understand that the 2021 Youth Swine Show is held in conjunction with the 2021 Florida State Fair and agree that the Florida State Fair is not liable or responsible for any delay, change of dates or cancellation of the 2021 Florida State Fair due to the following force majeure events: (a) acts of God; (b) flood, fire, earthquake; or (c) other potential disaster(s) or catastrophe(s), such as epidemics, or explosion.

☐ I agree to the above statement. (type "YES" if you agree)

Submit

Open Livestock Competitions | Online Entry Form Instructions... continued


Completed: Submission Successful

Completed!

✓ Submission Successful

Below is a summary of your transaction. You should print a detailed version at this time for your records or include in any correspondence.

⏏ Don't forget to print!



Note: To receive a copy of the receipt to your email, **CHECK** the box.

Transaction Summary for Florida State Fair

Confirmation ID: fsf-0290154539306

Total Exhibitors:	1
Total Entries:	1
Total Additional Items:	0
Transaction Time:	10/16/2020 3:45:40 PM
Transaction Amount:	\$15.00
Transaction Payment:	\$0.00
Transaction Balance:	\$15.00

☒ Also, email a copy of my receipt to: AG@floridastatefair.com

Print Detailed Receipt **Finish** →

Be sure to print detailed receipt

Florida State Fair On-line Entries Receipt			
ITEM	DESCRIPTION	WEN#	AMOUNT
Open Angus	Class: 24 Class Description: March Junior Yearling Heifers calved March, 2019 Gender: Female Birth Date: 3/9/2019 Animal Name: FSF Sample Entry #1 Registration ID: R12345 Tattoo#: FSF2021	C8209B	\$15.00
Open Boer Goat	Class: 02 Class Description: Percentage Junior Doe, 3 to under 6 months Gender: Female Birth Date: 10/1/2020 Tag ID: FSF1 Animal Name: FSF Sample Entry #2 Registration ID: 54321	22A7BB	\$10.00
Total for Fair Sample with 2 entries Contact: Lynann Hudson Address: PO Box 11788 City: Tampa State/Prov: FL Postal Code: 33680 County: Hillsborough Phone: (813) 821-7821 e-mail: AG@floridastatefair.com SSN/EIN (protected): xxx-xx-xxxx			
TOTAL:			\$25.00
PAYMENTS:			\$0.00
BALANCE DUE:			\$25.00
EXHIBITOR NAME:		Fair Sample	
CONFIRMATION ID:		fsf-0290154205585	
TRANSACTION TIME:		10/16/2020 3:42:05 PM	
Mandatory Disclosure of Social Security Number or Federal ID Number - Federal Tax regulation requires the Florida State Fair Authority (FSFA) to obtain Social Security Numbers (SSN) or Taxpayer Identification Number (TIN) from every person to whom compensation is paid. SSN or TIN are maintained and used by FSFA for the processing of payments due, and are reported to Federal and State agencies on forms required by law. FSFA will not disclose any SSN or TIN without your consent to anyone outside FSFA except as mandated by law. Failure to provide a SSN or TIN will result in denial of compensation.			
Florida State Fair On-line Entries Receipt Summary			
2 TOTAL ITEMS IN CART:			\$25.00
PAYMENTS:			-\$0.00
BALANCE DUE:			\$25.00
CONFIRMATION ID:		fsf-0290154205585	
Transaction Time: 10/16/2020 3:42:05 PM			

Open Livestock Competitions | Online Entry Form Instructions... continued

STEP 11 – Finish

- **CHOOSE** the brown “Finish” button on the Completed Page
- You will land on the “Thank you! Page”
- Feel free to provide feedback and rate your experience

STEP 12 – Email receipt

- You will be emailed a receipt
- If you wanted to pay later or have a balance due please see instructions for mailing your check to the Florida State Fair.

Below is your receipt. Please print and retain this for your records.

If you are mailing your Open or Youth Livestock payment to the Florida State Fair, you must include a copy of this receipt in the envelope.

Youth Exhibitors MUST complete the Signature Page to finalize entry process.

If you have any questions, please contact the Agribusiness Office at (813) 621-7821.

Florida State Fair On-line Entries Receipt			
ITEM	DESCRIPTION	WEN#	AMOUNT
Open Grey Brahman	Class: 42 Class Description: Late Junior Yearling Bulls calved Mar 1- Mar 31, 2019 Gender: Male Birth Date: 3/9/2019 Animal Name: KNightro Registration ID: 1234	722435	\$15.00
Total for lynann hudson with 1 entries Address: 10402 Tenner Road City: Tampa State/Prov: FL Postal Code: 33610 County: Hillsborough Phone: (813) 627-4339 e-mail: lynann.hudson@floridastatefair.com SSN/EIN (protected): xxx-xx-xxxx T-Shirt Size: Adult XX-Large Age Category: Senior (14 and older) Location of Animal: Home Place of the Exhibitor or Land Lab for Chapte Exhibitor Needs: No - Exhibitor does not have any learning or physiol			
TOTAL:			\$15.00
PAYMENTS:			\$0.00
BALANCE DUE:			\$15.00
EXHIBITOR NAME:		lynann hudson	
CONFIRMATION ID:		fcf0280081310281	
TRANSACTION TIME:		10/16/2020 9:13:11 AM	
Mandatory Disclosure of Social Security Number or Federal ID Number - Federal Tax regulation requires the Florida State Fair Authority (FSFA) to obtain Social Security Numbers (SSN) or Taxpayer Identification Number (TIN) from every person to whom compensation is paid. SSN or TIN are maintained and used by FSFA for the processing of payments due, and are reported to Federal and State agencies on forms required by law. FSFA will not disclose any SSN or TIN without your consent to anyone outside FSFA except as mandated by law. Failure to provide a SSN or TIN will result in denial of compensation.			
Florida State Fair On-line Entries Receipt Summary			
1 TOTAL ITEMS IN CART:			\$15.00
PAYMENTS:			\$0.00
BALANCE DUE:			\$15.00
CONFIRMATION ID:		fcf0280081310281	
Transaction Time: 10/16/2020 9:13:11 AM			

STEP 13 – Upload Livestock Entry Documents (Signature Page, Animal Registration Papers, YQCA Certificate, etc)

Please Note: Open Exhibitors are able to upload Animal Registration Papers by selecting “Upload Livestock Entry Documents” under the Registration Tab. These can also be emailed, faxed or mailed to expedite the check in process.

ON WEBSITE

CLICK on “Registration”

SELECT the Online Entry Form



SHOW RULES

REGISTRATION

The registration deadline is **December 2, 2022**

OPEN BEEF ENTRY FORM

YOUTH BEEF ENTRY FORM

On-Line Registration

UPLOAD LIVESTOCK ENTRY DOCUMENTS (Signature Page, Animal Registration Papers, YQCA Certificate, etc.)

Need help registering On-Line? Check out these two tutorials.

How to Submit an Open Livestock Online Entry

How to Submit a YOUTH Livestock Online Entry

DOWNLOADS

- **Fill out** all required information
- **Upload** Livestock Entry Document

**** Please upload High Resolution Documents
(or files that are large).
Do not minimize the documents.**

These documents can also be:

Mailed to – PO Box 11766, Tampa, FL 33680

Emailed to – AG@FloridaStateFair.com

Faxed to – 813-740-3520

Please contact the Ag Office if you have any problems or need assistance

LIVESTOCK ENTRY DOCUMENTS

Exhibitors are able to upload Livestock Entry Documents (Signature Pages, Animal Registration Papers, YQCA Certificates, etc) for the 2023 Florida State Fair.

**** Please upload High Resolution Documents (or files that are large). Do not minimize the documents.**

If you have any questions about this process, please contact us at AG@FloridaStateFair.com

Exhibitor's Name

First Name Last Name

Department

☐ Beef
☐ Dairy
☐ Sheep
☐ Dairy Goat
☐ Boer Goat
☐ Poultry
☐ Rabbit

Youth Signature Page

Choose File Remove File No File Chosen

Animal Registration Papers

Choose File Remove File No File Chosen

YQCA Certificate

Choose File Remove File No File Chosen

Additional Document

Choose File Remove File No File Chosen

Submit Form